



Bruce E. Ham Date: 2-27-23

Ham Engineering & Surveying, LLC
Bruce E. Ham, PLS-02927
5009 C D Rayborn Road
Jollyess MS 39641
Tel. 601-249-3976 – Office
Tel. 601-248-8058 – Cell

Legend

- ⊗ Set 1/2"φ X 18" Rebar
- Found 1/2" Rebar Unless Noted Otherwise
- Found Concrete ROW Monument
- Fence

POC Point of Commencement
POB Point of Beginning

Date of Field Survey: 02-22-23

Scale : 1" = 300'

Class "C" Survey

Reference Material

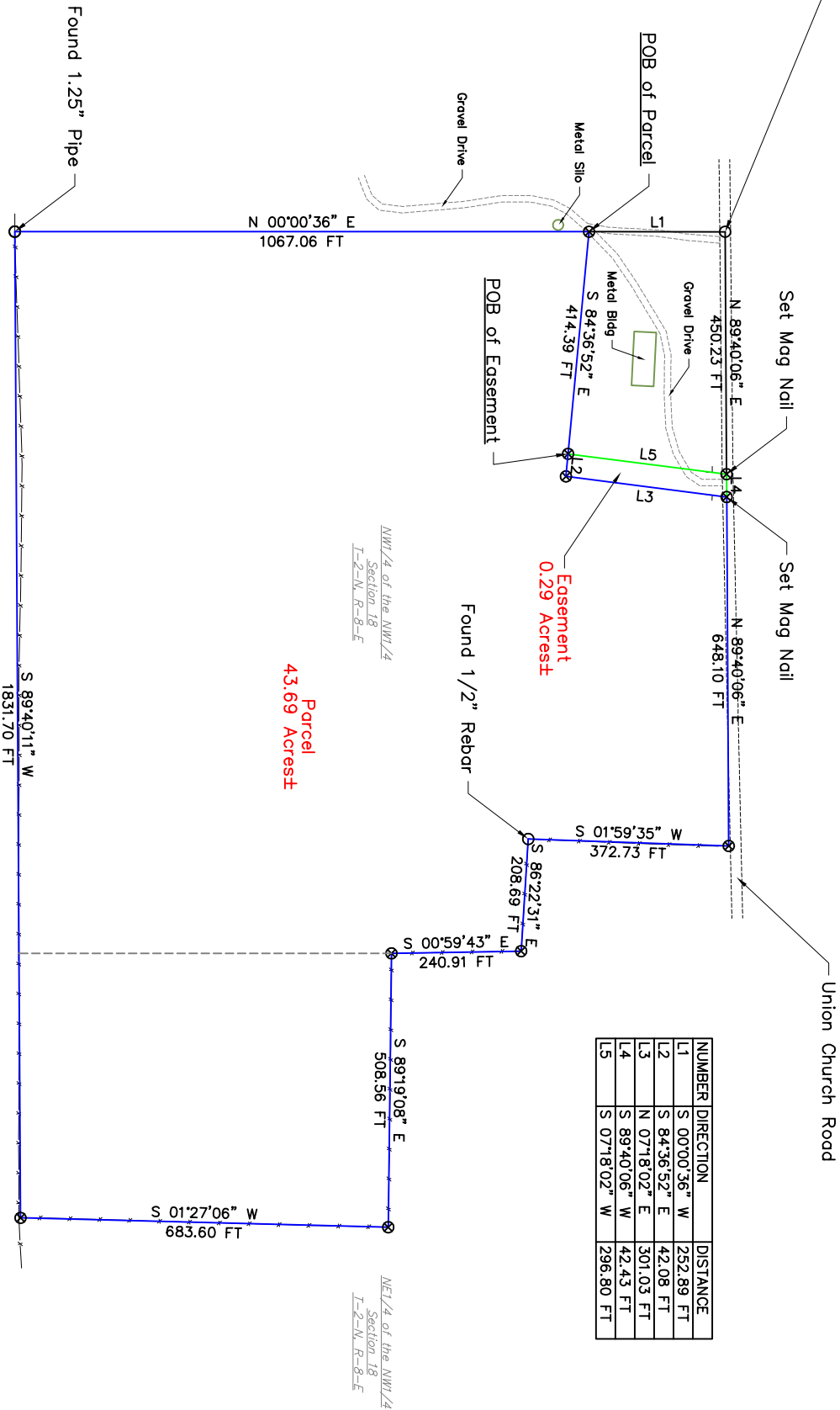
- DB 142, Page 299
- DB 172, Page 190
- DB 172, Page 193
- DB 172, Page 195
- DB 172, Page 197
- DB 276, Page 360
- DB 354, Page 611
- DB 365, Page 557
- DB 389, Page 114
- DB 459, Page 120
- DB 500, Page 105
- DB 507, Page 031

Utility Note:
No utility survey was conducted

Note:
This survey does not constitute a title search by the surveyor. There may be other documents of record which could affect this parcel.

Note
Parcel subject to public Right of Way

POC of Parcel &
POB of Easement
Found R/R Spike in
Union Church Road
at the NW corner
of Section 18,
T-2-N, R-8-E,
Pike County, MS



Description of Parcel:

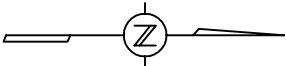
Commence at a found R/R spike in Union Church Road at the NW corner of Section 18, T-2-N, R-8-E, Pike County, Mississippi, and thence run S00°00'36"W – 252.89' to a set 1/2" rebar at the point of beginning, thence run S84°36'52"E – 414.39' to a set 1/2" rebar; thence run S84°36'52"E – 42.08' to a set 1/2" rebar; thence run N07°18'02"E – 301.03' to a set mag nail in Union Church Road; thence run N89°40'06"E – 648.10' to a set 1/2" rebar; thence run S01°59'35"W – 372.73' to a found 1/2" rebar; thence run S86°22'31"E – 208.69' to a set 1/2" rebar; thence run S00°59'43"E – 240.91' to a set 1/2" rebar; thence run S89°19'08"E – 508.56' to a set 1/2" rebar; thence run S01°27'06"W – 683.60' to a set 1/2" rebar; thence run S89°40'11"W – 1831.70' to a found 1.25" pipe; thence run N00°00'36"E – 1067.06' to the point of beginning. Said parcel contains 43.69 acres± and is located in a part of the NW1/4 of the NW1/4 and a part of the NE1/4 of the NW1/4 of Section 18, T-2-N, R-8-E, Pike County, Mississippi. Bearings in this description are based on a GPS observation of Geodetic North.

Description of Easement:

Commence at a found R/R spike in Union Church Road at the NW corner of Section 18, T-2-N, R-8-E, Pike County, Mississippi, and thence run S00°00'36"W – 252.89' to a set 1/2" rebar; thence run S84°36'52"E – 414.39' to a set 1/2" rebar at then point of beginning of an easement. From the point of beginning, thence run S84°36'52"E – 42.08' to a set 1/2" rebar; thence run N07°18'02"E – 301.03' to a set mag nail in Union Church Road; thence run S89°40'06"W – 42.43' to a set mag nail in Union Church Road; thence run S07°18'02"W – 296.80' to the point of beginning. Said easement contains 0.29 acres± and is located in a part of the NW1/4 of the NW1/4 of Section 18, T-2-N, R-8-E, Pike County, Mississippi. Bearings in this description are based on a GPS observation of Geodetic North.

NOTE:

Bearings Shown Are Referenced To A True Meridian As Determined By GPS Observation (RTK Solution) Unless Noted Otherwise.



Project: Survey For Vaughn Lampton
A part of the NW1/4 of the NW1/4 &
a part of the NE1/4 of the NW1/4
of Section 18, T-2-N, R-8-E,
Pike County, Mississippi